

THE STATION HOTEL

PUB & RESTAURANT

GUEST ACCOMMODATION ACCESS STATEMENT



Contact Information

The Station Hotel
Station Road, Birstwith
Harrogate, North Yorkshire
HG3 3AG

Telephone No:	01423 770254
Email Address:	admin@station-hotel.net
Website:	www.station-hotel.net
General Manager:	Emma Yates
Grid Reference:	SE 24530 59841

Opening Hours

Monday to Thursday	10.30 – 23.00
Friday	10.30 – 00.00
Saturday	10.30 – 23.00
Sunday	12.00 – 22.00

Food Service Times

Monday to Saturday	11.30 – 21.00
Sunday	12.00 – 20.00

CONTENTS	Page No.
1. GUEST ACCOMMODATION	3
2. ON ARRIVAL	3
3. GENERAL ROOM INFORMATION	3
4. ACCESS TO BEDROOMS – FIRST FLOOR	4
5. ACCESS TO GROUND FLOOR BEDROOM SUITE	5
6. ROOM 1 – MERLOT	5
7. ROOM 2 – CHABLIS	6
8. ROOM 3 – MALBEC	6
9. ROOM 4 – RIOJA	7
10. ROOM 5 – THE COACH HOUSE	7
10.1 Entrance / Access	7
10.2 Bedrooms	7
10.3 En-suite Shower / Wet Room	8

1. GUEST ACCOMMODATION

The Station Hotel has four bedrooms located on the first floor and an accessibility suite located on the ground floor, annexed to the main pub building.

2. ON ARRIVAL

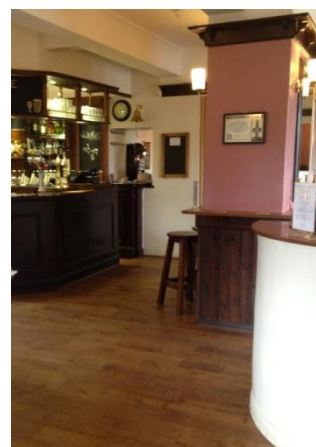
Guests will usually enter the pub via the main front door and approach the bar to begin the check-in procedure. The main front door (width 92cm/36") opens inwards onto a porch area measuring 1.6m (5ft 3") x 1.2m (3ft 11"). There is a second door (width 75cm/29") which opens into the porch. The floor level remains constant throughout. The porch flooring is hessian matting and the main pub flooring is oak. Guests are greeted at the bar, which is well lit, and seating is freely available in the bar/pub area. Visitors are asked to register their visit and are then shown to their rooms by a member of staff. Assistance with luggage is provided.



Main Entrance



Entry Porch into Pub



Access to the Bar

3. GENERAL ROOM INFORMATION

All our rooms are accessed using a key card swipe system which also operates the lights in each bedroom. Seating, bedside tables, bedside lamps, overhead lighting, wardrobe, chest of drawers/dressing table are provided in each room. Additional lighting can be provided on request. Beds are made up with non allergenic pillows and duvets. Sheets and blankets can be provided if preferred. All our rooms have en-suite facilities. Tea and coffee making facilities are provided. Each room has its own flat screen free-sat TV (with subtitle capability) and remote control. A hairdryer and an iPod/iPhone docking station/radio alarm clock are provided for guest use. An iron and ironing board are available on request. Electric radiators are installed in all the bedrooms and the hallways and can be adjusted to suit individual requirements. Each en-suite shower/bathroom has a heated towel rail.

4. ACCESS TO BEDROOMS – FIRST FLOOR

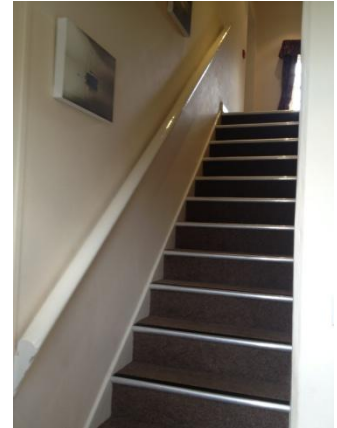
Access to the bedrooms is through the dining area which has oak flooring and the floor surface remains level. The door to the resident area is a dual swing door (width 78cm/30"). There is a small porch area which leads to the stairs. The porch is tiled and has a large non-slip mat. The Resident Exit is also located here and this can be used to access the building via a keycard swipe system when the pub is closed. Entry to the pub kitchen is also located in this area.



Bar Through to Dining Room



Door from Dining Room
to Resident's Area



Stairs Up To
Guest Bedrooms

Access to the upper floor bedrooms is via stairs with 14 steps each with a rise of 20.5cm/8". The staircase width is 79cm/31" and there is a solid wooden hand rail on the left hand side. At the top of the stairs there is a landing measuring 2.5m (8ft 2") x 1.2m (3ft 11") and a chair is available should it be required. To the left of the landing there is a step (17.5cm/7" rise) up to a larger level landing area. There is a fire safety door (width 79cm/31") in this area. Bedroom 1 (Merlot) is accessed from this level. A further chair is available in this area. Access to bedrooms 2, 3 & 4 (Chablis, Malbec and Rioja respectively) is achieved after a second step (12.5cm/5" rise). The stairs, landing areas and rooms are all carpeted, there are no rugs on the landing areas. All landing areas and walkways are clutter free.



First Landing with Chair



Landing Area Leading to Merlot



Landing Area Leading to Chablis,
Malbec & Rioja

5. ACCESS TO GROUND FLOOR BEDROOM SUITE

The “Coach House” accessibility suite is located to the right of the main building in a separate annexe. There is a designated large parking space (marked “Staff Parking”) directly outside the entrance. The parking space measures approximately 3.5m (11ft 6”) x 9.0m (29ft 6”).

The main door to the suite operates using a keycard swipe system and opens outwards (width 93cm/36”). The floor surface remains level between the entrance way and the car park. The entrance porch is 1.6m (5ft 3”) x 1.4m (4ft 7”) and 2 doors lead off this area. To the right is a door opening into the smaller bedroom (width 77cm/30”) and straight ahead a door leads into the main bedroom (width 87cm/34”). The floor surfaces in the entrance porch and bedrooms are carpeted. The distance from the main pub entrance to the Coach House is approximately 20m/65ft.



The Coach House Entrance

6. ROOM 1 – MERLOT (18m²)

This room has two single beds, 64cm/25” high, with access from both sides. Two tub chairs are provided. There are two bedside tables with lamps, a wardrobe, dressing table with mirror and a further chair. A large mirror is located over an original fireplace. This room has an en-suite shower room. The shower tray measures 19cm/7.5” in height, whilst the step into the shower has a rise of 23cm/9” (to allow for the shower door frame). The shower door width is 62cm/24”. Sink height is 97cm/38” and toilet seat height is 43cm/17”. A hook on the back of the en-suite door is provided.



Merlot's Twin Beds



Merlot's En-suite Shower Room



7. ROOM 2 – CHABLIS (19m²)

This room has a king size bed, 65cm/25.5" high, with access from both sides. A tub chair is provided. There are two bedside tables with lamps, a wardrobe, a dressing table with mirror and a further chair. A large mirror is located over an original fireplace. This room has an en-suite shower room. The shower tray measures 19cm/7.5" in height, whilst the step into the shower has a rise of 24.5cm/9.5" (to allow for the shower door frame). The shower door width is 42cm/16.5". Sink height is 84cm/33" and toilet seat height is 43cm/17". A hook on the back of the en-suite door is provided.



Chablis' King Size Bed



Chablis' En-suite Shower Room

8. ROOM 3 – MALBEC (28m²)

This room has a king size bed, 55cm/21.5" high, with access from both sides. Two tub chairs are provided. There are two bedside tables with lamps, a wardrobe and a chest of drawers. A large mirror is located over an original fireplace. This room has an en-suite bathroom. The bath height measures 54cm/21" in height, there is a shower over the bath. Sink height is 96cm/37.5" and toilet seat height is 43cm/16.5". A hook on the back of the en-suite door is provided.



Malbec's King Size Bed



Malbec's Bathroom

9. ROOM 4 – RIOJA (18.5m²)

This room has a king size bed, 66cm/26" high, with access from both sides. Two tub chairs are provided. There are two bedside tables with lamps, a wardrobe and a chest of drawers. A large mirror is located over an original fireplace. This room has an en-suite shower room. The shower tray measures 19cm/7.5" in height, whilst the step into the shower has a rise of 24cm/9" (to allow for the shower door frame). The shower door width is 51cm/20". Sink height is 98cm/38" and toilet seat height is 43cm/16.5". A hook on the back of the en-suite door is provided.



Rioja's King Size Bed



Seating Area in Rioja



Rioja's En-suite Shower Room

10. ROOM 5 – THE COACH HOUSE (35m²)

10.1 Entrance / Access

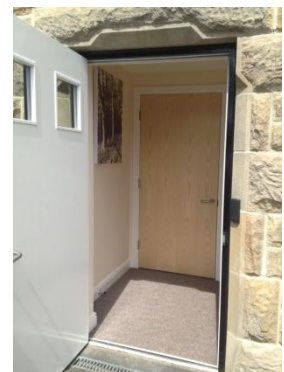
The Coach House is accessed via a door that opens outwards (width 93cm/36"). The main door to the suite is operated using a keycard swipe system. The floor surface remains level between the entrance way and the car park. The entrance way is 1.6m (5ft 3") x 1.4m (4ft 7"). Two doors lead off the entrance way, to the right is a door opening into the smaller bedroom (width 77cm/30") and straight ahead a door leads into the main bedroom (width 87cm/34"). The floor surfaces in the entrance way and bedrooms are carpeted. The Coach House is located approximately 20 metres (65ft) away from the main entrance to the pub.



View from the pub to the Coach House



Coach House Main Door



Coach House Entrance Vestibule

10.2 Bedrooms

The accessibility suite has 2 bedrooms. The main bedroom has a king size bed, 56cm/22" high, and is accessible from both sides, the width either side being a minimum of 93cm. There is a seating area measuring approximately 2.5m (8ft 2") x 2.0m (6ft 6"). The main bedroom has two tub chairs, a side table, 2 bedside tables with lamps, wardrobe and a dressing table with stool and mirror. The second bedroom has bunk beds suitable for use by adults. The second bedroom also has a chest of drawers, small lamp table and a bedside lamp. The second bedroom provides accommodation for a personal assistant / carer / friend or other family member. Both rooms are well lit with overhead lighting, natural light and bedside lamps. Additional lighting can be provided on request. Both bedrooms have access to the en-suite shower/wet room.



The Coach House – Main Bedroom

The walls of the bedrooms are painted magnolia whilst the carpet is dark brown. The shower room walls are covered with beige tiles and the flooring is a light brown. All the doors are light oak in colour and the door frames are white.

The wardrobe provided in the main bedroom is a “Gentleman’s wardrobe” and has two drawers at the base. The internal hanging rail cannot be adjusted. The duvet and pillows provided are non-allergenic, sheets and blankets can be provided if preferred.

Tea and coffee making facilities are provided and are located on a side table (56cm/22” high) in the seating area. There is a free-sat flat screen TV that has sub-title capabilities and a remote control. The main bedroom also has an iPod/iPhone docking station/radio alarm clock and hairdryer for guest use. An iron and iron board are all available on request. A guest information pack is provided in the main bedroom, a large print version is available on request.



The Coach House Second Bedroom

10.3 En-suite Shower / Wet Room

The en-suite wet room is approximately 2.85m (9ft 4") x 2.4m (7ft 10"). The floor surface is non-slip "Altro" flooring and remains level. The door to the bathroom from the main bedroom measures 88cm/34" in width, whilst the door to the bathroom from the second bedroom is 66cm/26" wide.

The toilet is 49cm/19" high and grab rails are provided to either side. The smaller hand basin does not have a pedestal and is 71cm/28" high. The tap is a lever mixer tap. There is a second sink with pedestal that is 84cm/33" high with a lever style mixer tap. There is an emergency pull cord located near the toilet/sink area which will alert staff in the pub should assistance be required.

There is a walk-in shower area with shower curtain, the shower area measures 1.1m (3ft 7") x 1.1m (3ft 7"). There is a fold down seat (height 46cm/18") and two grab rails. The shower head height can be adjusted and the shower temperature is thermostatically controlled and can be altered to suit individual requirements.



The Coach House – En-suite Shower / Wet Room