

# THE STATION HOTEL

## PUB & RESTAURANT

### PUB & RESTAURANT ACCESS STATEMENT



#### Contact Information

The Station Hotel  
Station Road, Birstwith  
Harrogate, North Yorkshire  
HG3 3AG

Telephone No:	01423 770254
Email Address:	<a href="mailto:admin@station-hotel.net">admin@station-hotel.net</a>
Website:	<a href="http://www.station-hotel.net">www.station-hotel.net</a>
General Manager:	Emma Yates
Grid Reference:	SE 24530 59841

#### Opening Hours

Monday to Thursday	10.30 – 23.00
Friday	10.30 – 00.00
Saturday	10.30 – 23.00
Sunday	12.00 – 22.00

#### Food Service Times

Monday to Saturday	11.30 – 21.00
Sunday	12.00 – 20.00

<b>CONTENTS</b>	<b>Page No.</b>
1. INTRODUCTION	3
2. PRE-ARRIVAL	4
3. CAR PARKING & ARRIVAL	4
4. GROUND FLOOR ENTRANCES	4
5. PUB & DINING AREAS	5
6. BEER GARDEN	6
7. CUSTOMER TOILETS	7
7.1 Ladies WC	7
7.2 Gents WC	8
7.3 Accessibility WC	8
8. ADDITIONAL INFORMATION	9
8.1 FIRE ALARM	9
8.2 ASSISTANCE DOGS	9
8.3 INTERNET ACCESS	9
8.4 FUTURE PLANS	9
9. USEFUL INFORMATION	10
9.1 Local Doctor	10
9.2 NHS Direct	10
9.3 Hospital	10
9.4 Local Carers Resource Centre	10
9.5 Local Equipment Hire	11
9.6 Local Public Transport	11
9.7 Local Accessible Taxi Service	11
9.8 Harrogate Shopmobility	11
9.9 Harrogate Wheelchair Centre	11

## **1. INTRODUCTION**

Set in Nidderdale, one of the North Yorkshire Dales, the Station Hotel dates back to the mid nineteenth century, and has been added to in similar style over the years. The pub is near to the centre of the Birstwith, and fronts Station Road, the main access through the village.

Harrogate, the nearest town, with extensive shopping and entertainment is six miles south east, while the Cathedral city of Ripon is about nine miles north.

Dale Stores our well stocked village shop is a half mile level walk (two minute drive). The church, a little further on, is set on a hill, whilst a few hundred yards in the opposite direction and up a gentle hill is the local medical centre. The Nidderdale Way, a long distance walk, can be accessed adjacent to the riverside about 150 yards away and there are several gentle and shorter walks available within a short distance of the pub. A regular bus service to Harrogate and Pateley Bridge runs past the pub, with a stop in the near vicinity, it also allows access to the nearest Railway Station in Harrogate, which links with Leeds and York. For drivers the pub is ideally located for the scenic Yorkshire dales and magnificent countryside beyond.

The Station serves freshly prepared food daily from a wide ranging menu that includes traditional pub classics and modern British food. Snacks, light lunches and a variety of sandwiches are also available. Food is served all day from 11.30am to 9pm Monday to Saturday and from 12noon to 8pm on Sundays and Bank Holidays. The bar and restaurant are located on the ground floor and are both accessible to wheelchair users. We are more than happy to cater for people with specific dietary requirements.

Our well stocked bar has a range of lagers and ales and we have been awarded Cask Marque accreditation. With 4 lagers, Guinness, Thatcher's Cider and up to 4 cask ales available at any one time there is plenty to choose from. We have a wide range of soft drinks, spirits and liqueurs and our wine list also has plenty of choice.

The ground floor main entry points to the pub are accessible by wheelchair. There are no significant changes in floor height once inside the pub, there is level access to the bar, restaurant and washroom facilities. A WC suitable for wheelchair use is provided and there are changing facilities for babies and toddlers.

Four guest bedrooms are located on the first floor, with en-suite facilities having level access. We also have a two bedroom Accessibility Suite on the ground floor as an annex to the main building.

## 2. PRE ARRIVAL

Harrogate Railway station is 6 miles distant and can be reached by taxi, Blue Line Taxis offer an accessible service on request.

The bus station in Harrogate is 200 metres level walk from the railway station and most buses are accessible, the number 24 on stand 9 leaves Harrogate Bus station at the following times:-

[Stand 9] 0620 0650 0805 0930 1030 1130 1230 1330 1430 1530 1640 1730 1835 2030 2250

The bus stop in Birstwith is about 100 metres from the pub, alight at 'Broomfield'.

The roads around the pub are tarmac with paved footpaths as far as the river bridge, where the pavement width is constrained, beyond this the footpaths are paved to the village shop. The local church and medical centre are accessible by wheel chair users.

## 3. CAR PARKING AND ARRIVAL

The pub has 28 car parking spaces. There is a designated accessible car parking space with chevrons marked on either side. The space is 5.25 metres (17ft) wide and is the first car parking space to the right hand side of the main entrance to the pub. Maximum distance from general car parking to the front entrance is approximately 50 yards. There is an area suitable for use as a drop off point beyond the car park entrance on the right at the end of the building. There is level access to the main entrance from any point on the front and rear car park.

The car park is tarmac and is generally level with slight slopes for drainage. There are no steps and the surface is firm. All parking is free. The whole of the car park is well lit. The main and rear entrance both have level access, which continues inside to all the public areas.



Front Entrance



Accessible Parking



Smoking Shelter & Rear Entrance

## 4. GROUND FLOOR ENTRANCES

The main front door (width 92cm/36") opens inwards onto a porch area measuring 1.6m (5ft 3") x 1.2m (3ft 11"). There is a second door (width 75cm/29.5") which opens into the porch. The floor level remains constant throughout. The porch flooring is hessian matting and the main pub flooring is oak.

The rear entrance door (width 87cm /34") opens outwards and gives access from the rear car park to a level corridor (width 104cm/41").

Assistance is available, on request, for help with luggage, wheelchairs and the serving of drinks and food

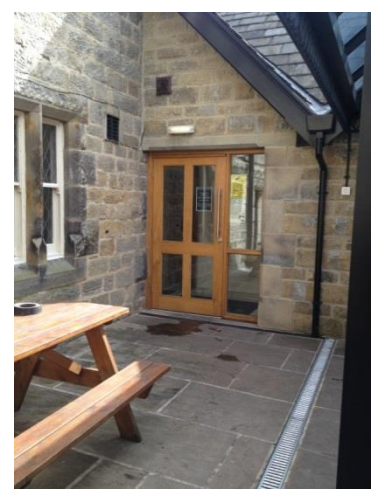




Front Main Entrance & Lobby



Entrance to Bar & Dining Areas



Rear Entrance

## 5. BAR & DINING AREAS

All the public areas are on the ground floor and have level access, generally with wide clear openings between areas the smallest of which is 87cm /34".

Space between tables is adequate for wheelchair access, and suitable space is available at most tables, the bar area does not have a lowered section, however table service is provided when necessary.

Mixed seating is available throughout the bar and the restaurant areas. There are a range of upright chairs both with and without arms, there is also bench seating in part of the restaurant and in the bar area. The table height in the Garden Room is 69cm /27" and in the Bar and Dining Room table height is 72cm /28.5", both to the underside.

All areas are well lit with a mix of ceiling spotlights and wall lighting. TV's are located in the bar area and the snug. TV and sound is activated if there is sufficient interest from customers, the remote control is held by the bar staff. Similarly a low level of background music is played and again controlled by the staff.

Flooring in the bar area and restaurant is of solid oak with level stone flags in the Garden Room, the corridor leading to the toilets and the rear door is tiled with flush carpet mats near the entrance.

Table service is in place for meals and associated drinks, normally drinks and snacks are ordered at the bar, table service is available on request. Most dietary requirements are catered for including vegetarian and gluten free. Menus are available in large print; when required staff can read out the menu and associated price lists.

White crockery is used which contrasts with the dark wood of the table top, table mats are also dark.

There is one dartboard, located in the 'snug' used by the darts team on Tuesday evenings.



Bar Area



Dining Area & Door To Residents Area



Dining Room

Garden Room



Window Area

## 6. BEER GARDEN

The covered smoking area is located at the rear of the pub, with firm level access from the car park and the 'toilet corridor'. This same area accesses the Beer Garden through a short but wiggly path which is 98cm/ 38.5" wide (see photographs below). The Beer garden is partially paved, with grassy areas; tables and chairs on the patio area are wheelchair accessible. Drinks and food are served in the garden on request.



Access to Beer Garden



Beer Garden

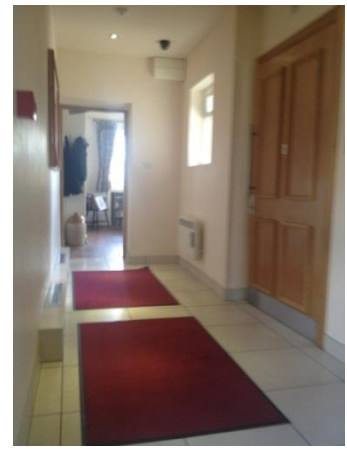
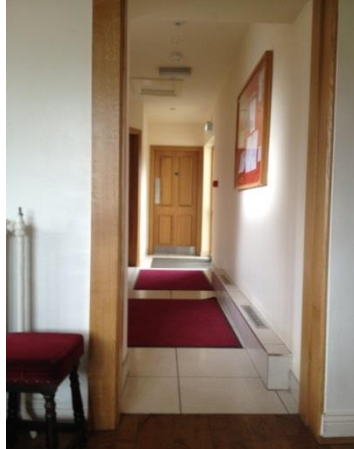


## 7. CUSTOMER TOILETS

The customer toilets are located on the ground floor of the main pub building. They are accessed via a wide corridor either from the rear entrance of the building or internally to the left of the main entrance doorway down a short corridor. Both entrance ways are accessible by wheelchair.



View From Main Entrance



View from Rear Entrance

The entrance to the customer toilets from the front of the building measures 78cm/30.75" wide. There is some boxed pipe work that reduces the gap to 73cm/28.75" for a short distance but it is negotiable by wheelchairs. The flooring changes from wood flooring to tiles but there is no change in floor level.

The rear entrance doorway measures 97cm/38" wide and has a brown matting at the entrance area. The corridor and all the customer toilets have white floor tiles and the corridor has 2 large non-slip red mats. There are no changes in floor level.

There are separate ladies and gents toilets and a unisex accessible WC with nappy changing facilities for babies and small children.

### 7.1 LADIES WC

The ladies toilets are located at the end of the building. The door width is 77cm/ 30.2" and opens inwards. There are two cubicles and two hand basins and an automatic hand dryer. An arm chair is provided. There is automatic overhead lighting and two frosted windows.



Ladies WC



Ladies WC

## 7.2 GENTS WC

The gent's toilet is situated half way down the corridor. The door width is 77cm/30.2" and opens inwards. There are two urinals, one cubicle, two hand basins and a hand dryer. There is automatic overhead lighting and a frosted window.



Gents WCF



Accessibility WC

## 7.3 ACCESSIBILITY WC

The accessible toilet is the first on the left when entering from the main area of the pub. It is available for use at all times. The door entrance measures 103cm/40" and opens outwards. The floor remains level. There is automatic overhead lighting and a frosted window. There is space to the right hand side when facing the wc for a wheelchair, this space is 75cm/29.5" wide. The wc is 45cm/17" from the floor to the seat and grab rails are located on each side. A small accessible sink is located near to the wc with a lever style tap. Guests can alert staff should they need assistance by using the red alarm cord located next to the toilet.



## **8. ADDITIONAL INFORMATION**

### **8.1 Fire Alarm**

The hotel has an automatic fire alarm system that will operate in the event of a fire or excess smoke. It is an audible system only. All fire exits are clearly sign posted. There are two automatic fire doors that will close in the event of a fire (the kitchen door and the door at the top of the stairs leading to the resident's bedrooms). The evacuation procedure is located on the back of each guest bedroom door and a large print version can be produced on request. Senior members of staff will assist guests, if it is safe for them to do so, in the event of an emergency evacuation of the building.

### **8.2 Assistance Dogs**

Assistance dogs are welcoming throughout the public areas of the building and in the Coach House guest accommodation. Water bowls can be provided on request and there is a small grassed area at the rear of the car park that can be used as a toilet area if necessary. Any dog fouling **MUST** be cleaned up and disposed of properly.

### **8.3 Internet Access**

The pub has free internet access throughout the main areas of the pub and in the guest bedrooms. The code to access the wifi is available on request.

### **8.4 Future Plans**

We are currently in the process of changing our menu format. Once this is complete we will be able to offer our menu in a large print format.

Further training of staff will take place later in the year to ensure that staff are effectively able to offer assistance to anyone with accessibility needs should they request it.

## **9. USEFUL INFORMATION**

### **9.1 Local Doctor**

The local doctor is located approximately ¼ mile from the pub at Spring Gables Surgery. The contact details are as follows:-

Spring Gables Surgery  
Nidderdale Group Practice  
Clint Bank  
Birstwith  
HG3 3AJ

Tel: 01423 770202

Tel: 0845 0568060 (out of hours)

Receptionists are available from 8.00am to 6.00pm, Monday to Friday.

Surgery times are from 8.00am to 10.30am and 4.00pm to 6.00pm Monday to Friday

North Yorkshire & York Primary Care Trust is responsible for the provision of out-of-hours cover. When the surgery is closed, emergency cover is provided by GPs in the Harrogate and Rural District area who take turns at being on call. If you have an urgent problem when the surgery is closed you should call the Out of Hours service on the number listed above. Please confine your calls to urgent matters only.

### **9.2 NHS Direct**

In the case of urgent need when the doctors surgery is closed you can call NHS Direct (0845 4647) to speak to a triage nurse. Your needs will be assessed and advice offered or arrangements made for you to see a doctor. Please do not ask to see a doctor out of hours unless you genuinely cannot wait until the surgery re-opens.

**Call 999 in an emergency. Chest pains and / or shortness of breath constitute an emergency.**

### **9.3 Hospital**

The nearest hospital is Harrogate Hospital located just over 7 miles from the pub. It takes approximately 15-20 minutes by car. The contact details are:-

Harrogate District Hospital  
Lancaster Park Road  
Harrogate  
North Yorkshire  
HG2 7SX

Tel: 01423 885959

For those who are unable to communicate by standard telephone, because of hearing or speech difficulties, please call the minicom telephone number on 01423 554466.

### **9.4 Local Carers Resource Centre**

11 North Park Road  
Harrogate  
HG1 5PD

Telephone No:	01423 500555
Website:	<a href="http://www.carersresource.org">www.carersresource.org</a>
Email:	<a href="mailto:director@carersresource.org">director@carersresource.org</a>

### **9.5 Local Equipment Hire**

Yorkshire Care Equipment  
Linkside House  
Forest Lane Head  
Harrogate  
HG2 7TE

Telephone No: 01423 799960  
Website: [www.yorkshirecareequipment.com](http://www.yorkshirecareequipment.com)  
Email: [enquiries@yorkshirecareequipment.com](mailto:enquiries@yorkshirecareequipment.com)  
Open: Mon to Fri, 8.30am to 4.30pm

### **9.6 Local Public Transport**

Harrogate & District (Transdev)  
Freepost H&D

Telephone No: 01423 566061  
Website: [www.harrogatebus.co.uk](http://www.harrogatebus.co.uk)  
Email: [enquire@harrogateanddistrict.co.uk](mailto:enquire@harrogateanddistrict.co.uk)  
Bus route: No 24. Harrogate to Pateley Bridge

### **9.7 Local Accessible Taxi Service**

Blue Line Taxis  
6 Strawberry Dale  
Harrogate  
HG1 5EF

Telephone No: 01423 530830  
Website: [www.bluelinetaxis.co.uk](http://www.bluelinetaxis.co.uk)  
Email: [mail@bluelinetaxis.co.uk](mailto:mail@bluelinetaxis.co.uk)

### **9.8 Harrogate Shopmobility**

East Parade Level 10  
Victoria Car Park  
Harrogate  
North Yorkshire  
HG1 5LQ

Telephone No: 01423 556778

### **9.9 Harrogate Wheelchair Centre,**

The Parade  
Harrogate  
HG1 5ND

Telephone No: 01423 817872